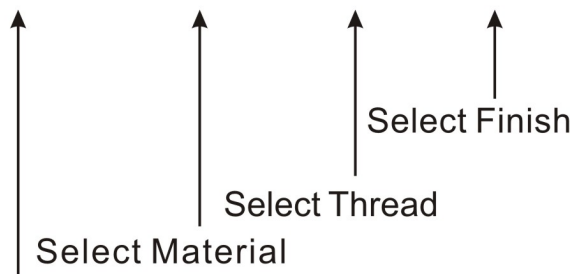


### How to order American Standard Male-Female Standoffs

## AMF- 31601-MS1- 256- S10



#### Tolerances:

Diameter: Standard commercial bar stock tolerances.

Length: 0 UP to 4" ± .005

From 4" to 6" ± .008

Over 6" ± .010

#### Threads:

External - Standard Unified Class 2A

Internal - Standard Unified Class 2B

Select Part No. corresponding to the diameter and length necessary for Your application

Material Description	Code		
	Round	Square	Hex
Carbon Steel	MS1	MS2	MS3
300 Series Stainless Steel	MSS1	MSS2	MSS3
Aluminum	MA1	MA2	MA3
Brass	MB1	MB2	MB3
Nylon	MN1	MN2	MN3

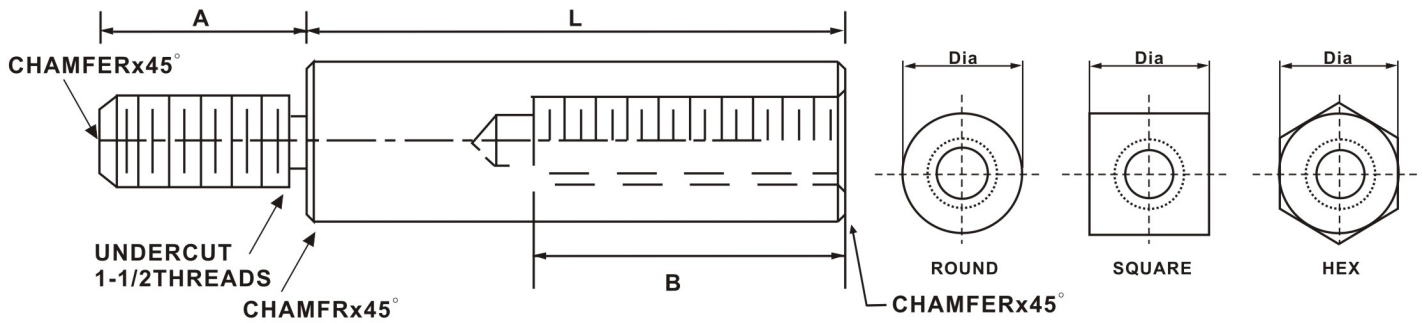
Finish Description	Code
Nickel Plate	S1
Chrome Plate	S2
Satin Chrome	S6
Zinc Plate	S10
Zinc Yellow Chromate	S11
No Finish	S14
Black Oxide	S22
Black Zinc	S23
Passivate	SB5
Anodize Clear	SA1
Glossy Anodize Clear	SA2
Anodize Black	SA3
Glossy Anodize Black	SA4
Clear Iridite	SA5

Code	Thread	A	B
256	2-56	5/32	3/16
440	4-40	3/16	1/4
632	6-32	1/4	3/8
832	8-32	3/8	7/16
1032	10-32	3/8	1/2
1224	12-24	1/2	9/16
1420	1/4-20	1/2	9/16
51618	5/16-18	9/16	9/16

Lengths "B" will be tapped to maximum depth.

# MALE-FEMALE STANDOFFS

America Standard



## 3/16" Diameter Male-Female Standoffs

Part No.	Length	Part No.	Length	Part No.	Length
AMF-31601	5/32	AMF-31616	5/8	AMF-31631	1-3/16
AMF-31602	3/16	AMF-31617	21/32	AMF-31632	1-1/4
AMF-31603	7/32	AMF-31618	11/16	AMF-31633	1-5/16
AMF-31604	1/4	AMF-31619	23/32	AMF-31634	1-3/8
AMF-31605	9/32	AMF-31620	3/4	AMF-31635	1-7/16
AMF-31606	5/16	AMF-31621	25/32	AMF-31636	1-1/2
AMF-31607	11/32	AMF-31622	13/16	AMF-31637	1-9/16
AMF-31608	3/8	AMF-31623	27/32	AMF-31638	1-5/8
AMF-31609	13/32	AMF-31624	7/8	AMF-31639	1-11/16
AMF-31610	7/16	AMF-31625	29/32	AMF-31640	1-3/4
AMF-31611	15/32	AMF-31626	15/16	AMF-31641	1-13/16
AMF-31612	1/2	AMF-31627	31/32	AMF-31642	1-7/8
AMF-31613	17/32	AMF-31628	1	AMF-31643	1-15/16
AMF-31614	9/16	AMF-31629	1-1/16	AMF-31644	2
AMF-31615	19/32	AMF-31630	1-1/8		

## 1/4" Diameter Male-Female Standoffs

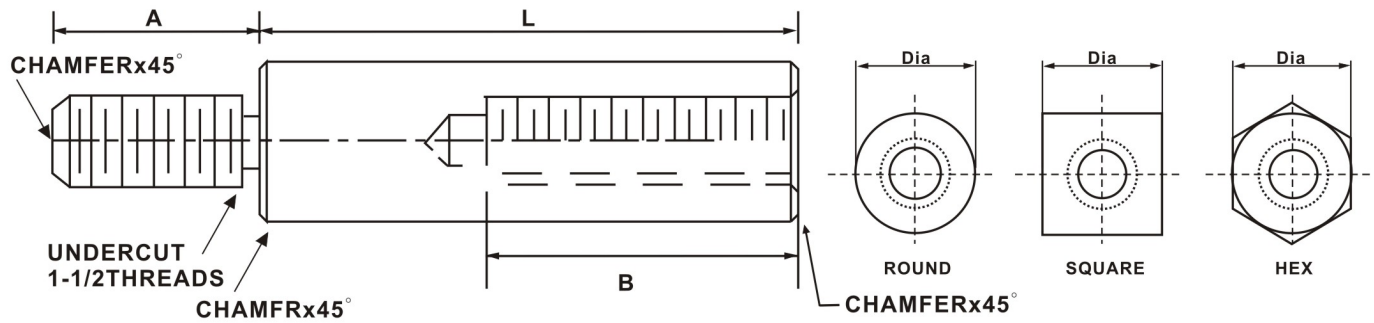
Part No.	Length	Part No.	Length	Part No.	Length
AMF-1401	7/32	MFS-1419	25/32	AMF-1437	1-11/16
AMF-1402	1/4	MFS-1420	13/16	AMF-1438	1-3/4
AMF-1403	9/32	MFS-1421	27/32	AMF-1439	1-13/16
AMF-1404	5/16	MFS-1422	7/8	AMF-1440	1-7/8
AMF-1405	11/32	MFS-1423	29/32	AMF-1441	1-15/16
AMF-1406	3/8	MFS-1424	15/16	AMF-1442	2
AMF-1407	13/32	MFS-1425	31/32	AMF-1443	2-1/8
AMF-1408	7/16	MFS-1426	1	AMF-1444	2-1/4
AMF-1409	15/32	MFS-1427	1-1/16	AMF-1445	2-3/8
AMF-1410	1/2	MFS-1428	1-1/8	AMF-1446	2-1/2
AMF-1411	17/32	MFS-1429	1-3/16	AMF-1447	2-5/8
AMF-1412	9/16	MFS-1430	1-1/4	AMF-1448	2-3/4
AMF-1413	19/32	MFS-1431	1-5/16	AMF-1449	2-7/8
AMF-1414	5/8	MFS-1432	1-3/8	AMF-1450	3
AMF-1415	21/32	MFS-1433	1-7/16	AMF-1451	3-1/4
AMF-1416	11/16	MFS-1434	1-1/2	AMF-1452	3-1/2
AMF-1417	23/32	MFS-1435	1-9/16	AMF-1453	3-3/4
AMF-1418	3/4	MFS-1436	1-5/8	AMF-1454	4

Custom modified products are available.



# MALE-FEMALE STANDOFFS

## America Standard



### 5/16" Diameter Male-Female Standoffs

Part No.	Length	Part No.	Length	Part No.	Length
AMF-51601	7/32	AMF-51622	7/8	AMF-51643	2-1/8
AMF-51602	1/4	AMF-51623	29/32	AMF-51644	2-1/4
AMF-51603	9/32	AMF-51624	15/16	AMF-51645	2-3/8
AMF-51604	5/16	AMF-51625	31/32	AMF-51646	2-1/2
AMF-51605	11/32	AMF-51626	1	AMF-51647	2-5/8
AMF-51606	3/8	AMF-51627	1-1/16	AMF-51648	2-3/4
AMF-51607	13/32	AMF-51628	1-1/8	AMF-51649	2-7/8
AMF-51608	7/16	AMF-51629	1-3/16	AMF-51650	3
AMF-51609	15/32	AMF-51630	1-1/4	AMF-51651	3-1/4
AMF-51610	1/2	AMF-51631	1-5/16	AMF-51652	3-1/2
AMF-51611	17/32	AMF-51632	1-3/8	AMF-51653	3-3/4
AMF-51612	9/16	AMF-51633	1-7/16	AMF-51654	4
AMF-51613	19/32	AMF-51634	1-1/2	AMF-51655	4-1/4
AMF-51614	5/8	AMF-51635	1-9/16	AMF-51656	4-1/2
AMF-51615	21/32	AMF-51636	1-5/8	AMF-51657	4-3/4
AMF-51616	11/16	AMF-51637	1-11/16	AMF-51658	5
AMF-51617	23/32	AMF-51638	1-3/4	AMF-51659	5-1/4
AMF-51618	3/4	AMF-51639	1-13/16	AMF-51660	5-1/2
AMF-51619	25/32	AMF-51640	1-7/8	AMF-51661	5-3/4
AMF-51620	13/16	AMF-51641	1-15/16	AMF-51662	6
AMF-51621	27/32	AMF-51642	2		

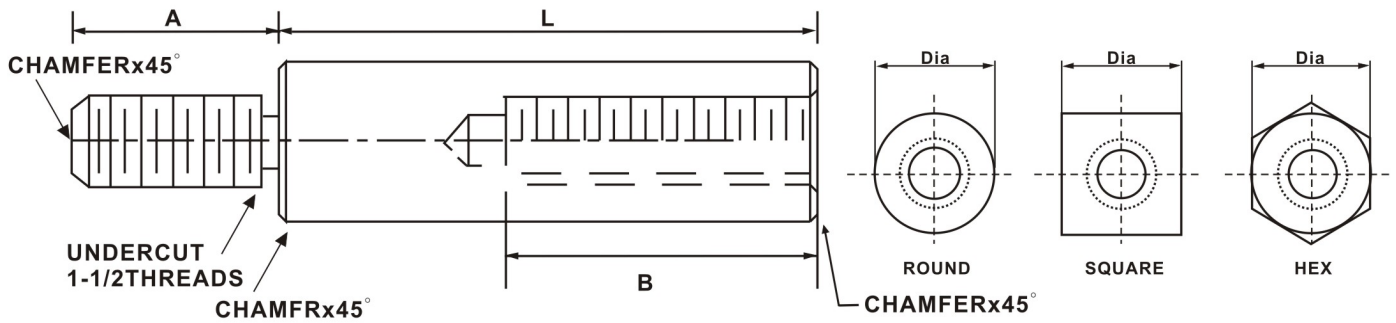
### 3/8" Diameter Male-Female Standoffs

Part No.	Length	Part No.	Length	Part No.	Length
AMF-3801	7/32	AMF-3822	7/8	AMF-3843	2-1/8
AMF-3802	1/4	AMF-3823	29/32	AMF-3844	2-1/4
AMF-3803	9/32	AMF-3824	15/16	AMF-3845	2-3/8
AMF-3804	5/16	AMF-3825	31/32	AMF-3846	2-1/2
AMF-3805	11/32	AMF-3826	1	AMF-3847	2-5/8
AMF-3806	3/8	AMF-3827	1-1/16	AMF-3848	2-3/4
AMF-3807	13/32	AMF-3828	1-1/8	AMF-3849	2-7/8
AMF-3808	7/16	AMF-3829	1-3/16	AMF-3850	3
AMF-3809	15/32	AMF-3830	1-1/4	AMF-3851	3-1/4
AMF-3810	1/2	AMF-3831	1-5/16	AMF-3852	3-1/2
AMF-3811	17/32	AMF-3832	1-3/8	AMF-3853	3-3/4
AMF-3812	9/16	AMF-3833	1-7/16	AMF-3854	4
AMF-3813	19/32	AMF-3834	1-1/2	AMF-3855	4-1/4
AMF-3814	5/8	AMF-3835	1-9/16	AMF-3856	4-1/2
AMF-3815	21/32	AMF-3836	1-5/8	AMF-3857	4-3/4
AMF-3816	11/16	AMF-3837	1-11/16	AMF-3858	5
AMF-3817	23/32	AMF-3838	1-3/4	AMF-3859	5-1/4
AMF-3818	3/4	AMF-3839	1-13/16	AMF-3860	5-1/2
AMF-3819	25/32	AMF-3840	1-7/8	AMF-3861	5-3/4
AMF-3820	13/16	AMF-3841	1-15/16	AMF-3862	6
AMF-3821	27/32	AMF-3842	2		

Custom modified products are available.

# MALE-FEMALE STANDOFFS

America Standard

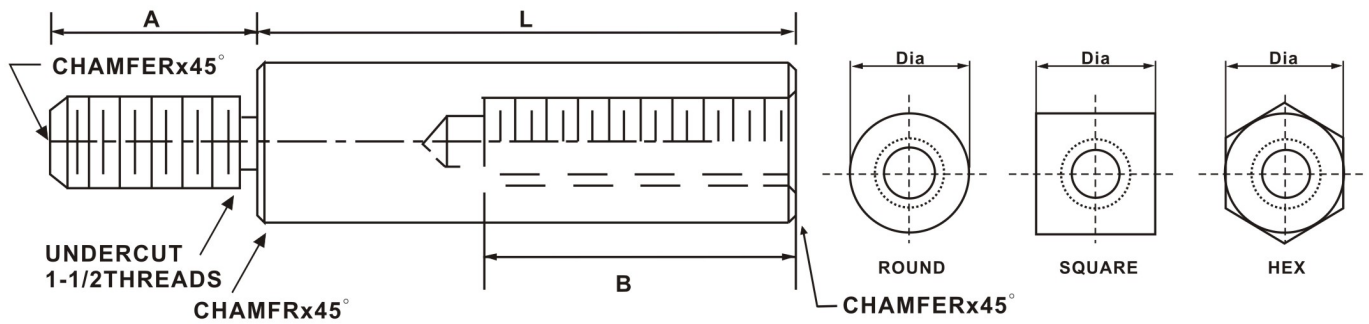


## 1/2" Diameter Male-Female Standoffs

Part No.	Length	Part No.	Length	Part No.	Length
AMF-1201	7/32	AMF-1222	7/8	AMF-1243	2-1/8
AMF-1202	1/4	AMF-1223	29/32	AMF-1244	2-1/4
AMF-1203	9/32	AMF-1224	15/16	AMF-1245	2-3/8
AMF-1204	5/16	AMF-1225	31/32	AMF-1246	2-1/2
AMF-1205	11/32	AMF-1226	1	AMF-1247	2-5/8
AMF-1206	3/8	AMF-1227	1-1/16	AMF-1248	2-3/4
AMF-1207	13/32	AMF-1228	1-1/8	AMF-1249	2-7/8
AMF-1208	7/16	AMF-1229	1-3/16	AMF-1250	3
AMF-1209	15/32	AMF-1230	1-1/4	AMF-1251	3-1/4
AMF-1210	1/2	AMF-1231	1-5/16	AMF-1252	3-1/2
AMF-1211	17/32	AMF-1232	1-3/8	AMF-1253	3-3/4
AMF-1212	9/16	AMF-1233	1-7/16	AMF-1254	4
AMF-1213	19/32	AMF-1234	1-1/2	AMF-1255	4-1/4
AMF-1214	5/8	AMF-1235	1-9/16	AMF-1256	4-1/2
AMF-1215	21/32	AMF-1236	1-5/8	AMF-1257	4-3/4
AMF-1216	11/16	AMF-1237	1-11/16	AMF-1258	5
AMF-1217	23/32	AMF-1238	1-3/4	AMF-1259	5-1/4
AMF-1218	3/4	AMF-1239	1-13/16	AMF-1260	5-1/2
AMF-1219	25/32	AMF-1240	1-7/8	AMF-1261	5-3/4
AMF-1220	13/16	AMF-1241	1-15/16	AMF-1262	6
AMF-1221	27/32	AMF-1242	2		

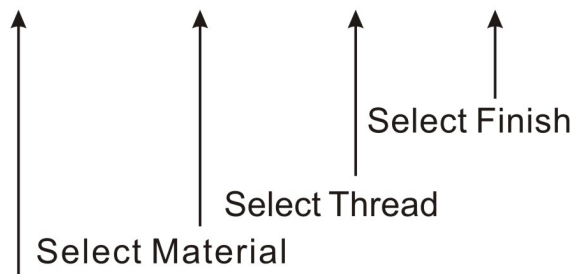
[Custom modified products are available.](#)





### How to order Metric Standard Male-Female Standoffs

## MMF- 0505-MS1- M2.5- S10



#### Tolerances:

Diameter: Standard commercial bar stock tolerances.

Length: 0 UP to 100 ± 0.13

From 100 to 150 ± 0.2

Over 150 ± 0.25

#### Threads:

External - Standard Unified Class 6g

Internal - Standard Unified Class 6h

Select Part No. corresponding to the diameter and length necessary for Your application

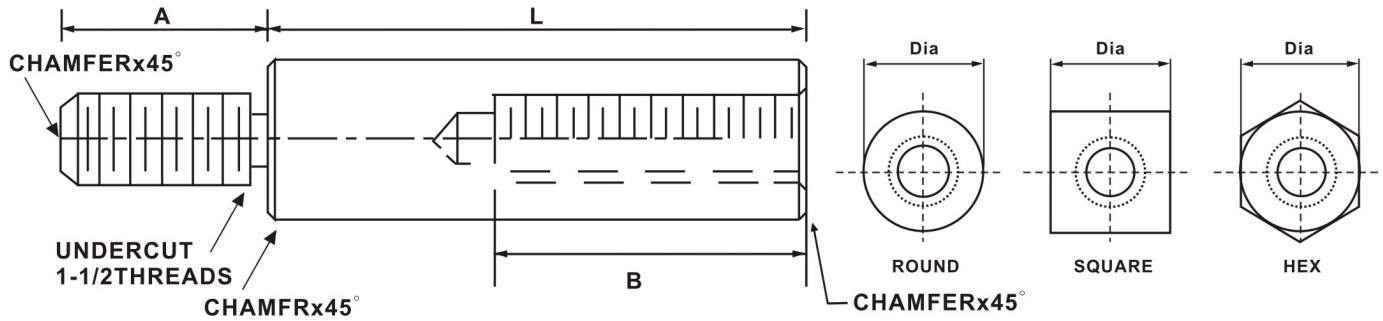
Material Description	Code		
	Round	Square	Hex
Carbon Steel	MS1	MS2	MS3
300 Series Stainless Steel	MSS1	MSS2	MSS3
Aluminum	MA1	MA2	MA3
Brass	MB1	MB2	MB3
Nylon	MN1	MN2	MN3

Finish Description	Code
Nickel Plate	S1
Chrome Plate	S2
Satin Chrome	S6
Zinc Plate	S10
Zinc Yellow Chromate	S11
No Finish	S14
Black Oxide	S22
Black Zinc	S23
Passivate	SB5
Anodize Clear	SA1
Glossy Anodize Clear	SA2
Anodize Black	SA3
Glossy Anodize Black	SA4
Clear Iridite	SA5

Code	Thread	A	B
M2.5	M2.5x0.45	3.97	4.8
M3	M3x0.5	4.76	6.4
M3.5	M3.5x0.6	6.35	9.5
M4	M4x0.7	9.53	11.1
M5	M5x0.8	9.5	12.7
M6	M6x1.0	12.7	15
M8	M8x1.25	12.7	15
M10	M10x1.5	15	16

Lengths "B" will be tapped to maximum depth.

[Custom modified products are available.](#)



### 5mm Diameter Male-Female Standoffs

Part No.	Length	Part No.	Length	Part No.	Length
MMF-0501	5	MMF-0512	16	MMF-0523	27
MMF-0502	6	MMF-0513	17	MMF-0524	28
MMF-0503	7	MMF-0514	18	MMF-0525	31
MMF-0504	8	MMF-0515	19	MMF-0526	34
MMF-0505	9	MMF-0516	20	MMF-0527	37
MMF-0506	10	MMF-0517	21	MMF-0528	40
MMF-0507	11	MMF-0518	22	MMF-0529	43
MMF-0508	12	MMF-0519	23	MMF-0530	46
MMF-0509	13	MMF-0520	24	MMF-0531	49
MMF-0510	14	MMF-0521	25	MMF-0532	52
MMF-0511	15	MMF-0522	26		

### 6mm Diameter Male-Female Standoffs

Part No.	Length	Part No.	Length	Part No.	Length
MMF-0601	5	MMF-0612	16	MMF-0623	27
MMF-0602	6	MMF-0613	17	MMF-0624	28
MMF-0603	7	MMF-0614	18	MMF-0625	31
MMF-0604	8	MMF-0615	19	MMF-0626	34
MMF-0605	9	MMF-0616	20	MMF-0627	37
MMF-0606	10	MMF-0617	21	MMF-0628	40
MMF-0607	11	MMF-0618	22	MMF-0629	43
MMF-0608	12	MMF-0619	23	MMF-0630	46
MMF-0609	13	MMF-0620	24	MMF-0631	49
MMF-0610	14	MMF-0621	25	MMF-0632	52
MMF-0611	15	MMF-0622	26		

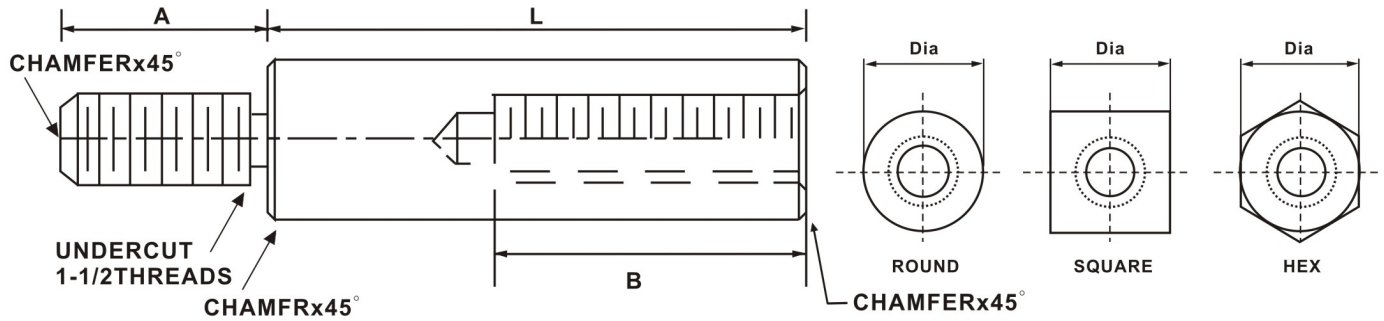
### 7mm Diameter Male-Female Standoffs

Part No.	Length	Part No.	Length	Part No.	Length
MMF-0701	5	MMF-0712	16	MMF-0723	27
MMF-0702	6	MMF-0713	17	MMF-0724	28
MMF-0703	7	MMF-0714	18	MMF-0725	31
MMF-0704	8	MMF-0715	19	MMF-0726	34
MMF-0705	9	MMF-0716	20	MMF-0727	37
MMF-0706	10	MMF-0717	21	MMF-0728	40
MMF-0707	11	MMF-0718	22	MMF-0729	43
MMF-0708	12	MMF-0719	23	MMF-0730	46
MMF-0709	13	MMF-0720	24	MMF-0731	49
MMF-0710	14	MMF-0721	25	MMF-0732	52
MMF-0711	15	MMF-0722	26		



# MALE-FEMALE STANDOFFS

## America Standard



### 8mm Diameter Male-Female Standoffs

Part No.	Length	Part No.	Length	Part No.	Length
MMF-0801	5	MMF-0812	16	MMF-0823	27
MMF-0802	6	MMF-0813	17	MMF-0824	28
MMF-0803	7	MMF-0814	18	MMF-0825	31
MMF-0804	8	MMF-0815	19	MMF-0826	34
MMF-0805	9	MMF-0816	20	MMF-0827	37
MMF-0806	10	MMF-0817	21	MMF-0828	40
MMF-0807	11	MMF-0818	22	MMF-0829	43
MMF-0808	12	MMF-0819	23	MMF-0830	46
MMF-0809	13	MMF-0820	24	MMF-0831	49
MMF-0810	14	MMF-0821	25	MMF-0832	52
MMF-0811	15	MMF-0822	26		

### 10mm Diameter Male-Female Standoffs

Part No.	Length	Part No.	Length	Part No.	Length
MMF-1001	5	MMF-1012	16	MMF-1023	27
MMF-1002	6	MMF-1013	17	MMF-1024	28
MMF-1003	7	MMF-1014	18	MMF-1025	31
MMF-1004	8	MMF-1015	19	MMF-1026	34
MMF-1005	9	MMF-1016	20	MMF-1027	37
MMF-1006	10	MMF-1017	21	MMF-1028	40
MMF-1007	11	MMF-1018	22	MMF-1029	43
MMF-1008	12	MMF-1019	23	MMF-1030	46
MMF-1009	13	MMF-1020	24	MMF-1031	49
MMF-1010	14	MMF-1021	25	MMF-1032	52
MMF-1011	15	MMF-1022	26		

### 13mm Diameter Male-Female Standoffs

Part No.	Length	Part No.	Length	Part No.	Length
MMF-1301	5	MMF-1312	16	MMF-1323	27
MMF-1302	6	MMF-1313	17	MMF-1324	28
MMF-1303	7	MMF-1314	18	MMF-1325	31
MMF-1304	8	MMF-1315	19	MMF-1326	34
MMF-1305	9	MMF-1316	20	MMF-1327	37
MMF-1306	10	MMF-1317	21	MMF-1328	40
MMF-1307	11	MMF-1318	22	MMF-1329	43
MMF-1308	12	MMF-1319	23	MMF-1330	46
MMF-1309	13	MMF-1320	24	MMF-1331	49
MMF-1310	14	MMF-1321	25	MMF-1332	52
MMF-1311	15	MMF-1322	26		

Custom modified products are available.